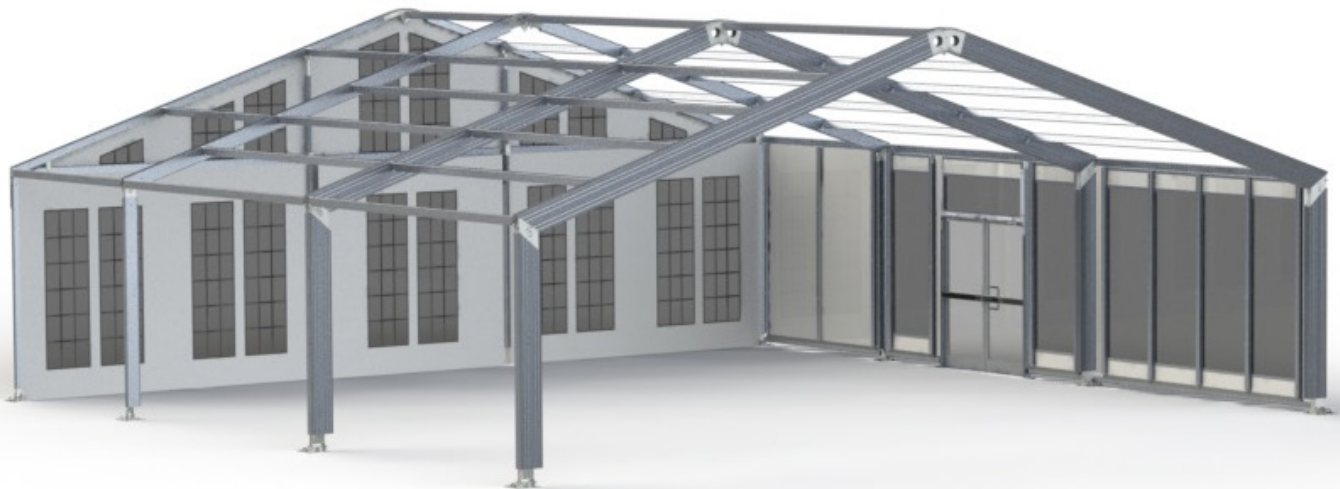




**GRANDCHAMP**

**STRUCTURE DESIGN**

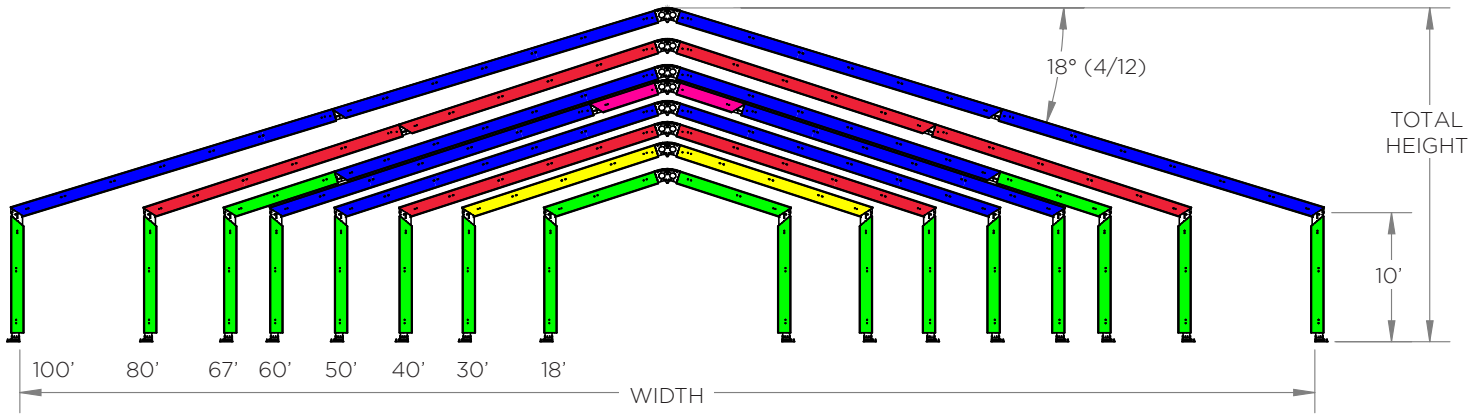
**TECHNICAL SHEET**  
STRUCTURE



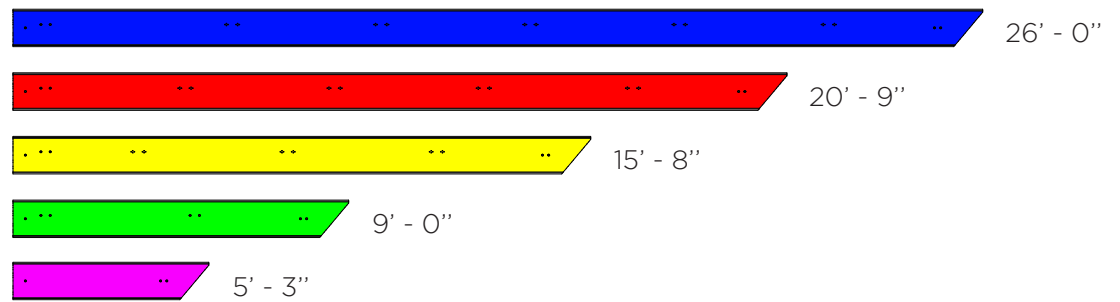


# TECHNICAL SHEET

## Grandchamp's XL Beam



Width	18'	30'	40'	50'	60'	67'	80'	100'
<b>Total height</b>	13' - 4"	15' - 5"	17' - 0"	18' - 7"	20' - 3"	21' - 4"	23' - 5"	25' - 10"
<b>Number of purlins in summer/*winter</b>	5 / 9*	5 / 9*	7 / 11*	9 / 13*	9 / 13*	11 / 17*	11 / 19*	15 / 25*
<b>Rafter total length</b>	9' - 0"	15' - 8"	20' - 9"	26' - 0"	31' - 3"	35' - 0"	41' - 6"	52' - 0"
<b>Wind Resistance</b>	180 km/h (117 mph)	165 km/h (103 mph)	140 km/h (87 mph)	130 km/h (80 mph)	125 km/h (77 mph)	120 km/h (75 mph)	110 km/h (68 mph)	80 km/h (40 mph)
<b>Snow Load (Psf)</b>	52	52	38	23	16	11	12	12



### STRUCTURE & XL PROFILE

- Dimensions: 4.50" X 12.00"
- Anodized 6005-T5 aluminum extrusion
- Other parts in ASTM A36 and A514 Gr.S (CHT100) zinc plated steel
- Steel cables 1/2" - 6X19 white vinyl coated
- 2X square rail for 'Bolt-On' attachment system (pendant lights, decor, etc.)
- Universal bolt 1/2 - 13 Gr.5



# TECHNICAL SHEET

## Vinyl

---

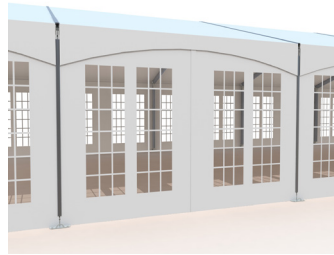
- Coated vinyl 22oz
- NFPA 701 and CAN / ULC-S109 fire retardant
- Opaque to UV rays (Blackout)
- Anti-mold vinyl
- All vinyl parts inserted in the Keder rails (13mm)
- Rollers for wall opening
- Carrying bags of vinyl parts included

## Wall options

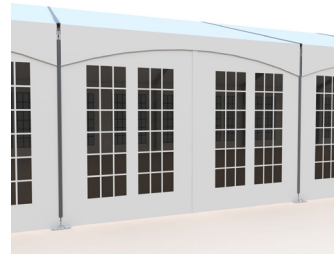
---



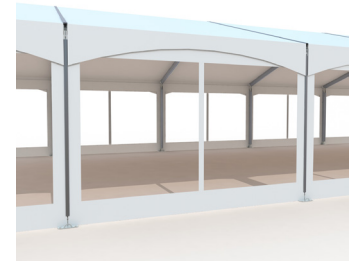
Plain



Clear window



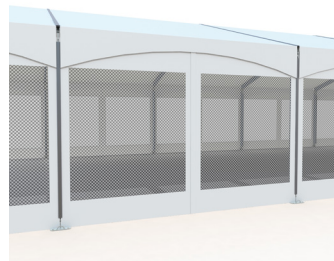
Tinted window



Panoramic clear



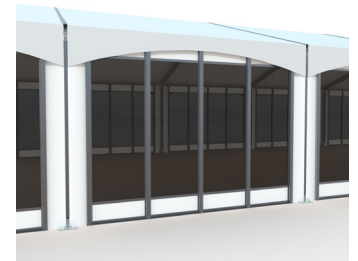
Panoramic tinted



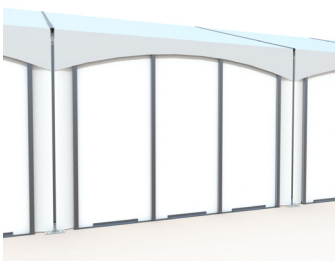
Mesh



Strip window



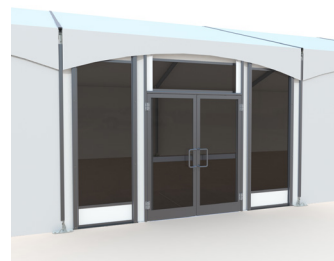
Glass window



Rigid wall



Door with plain contour



Door with glass contour

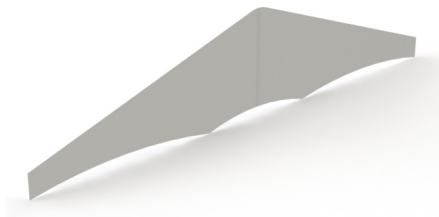


Door with window contour

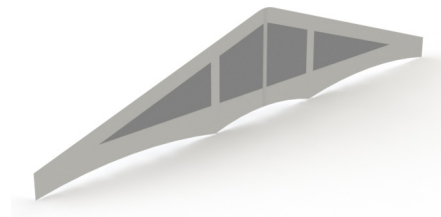


## Gable end options

---



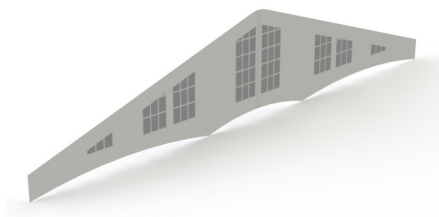
Plain



Panoramic tinted



Clear French Window



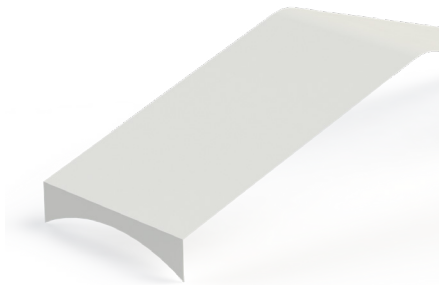
Tinted French Window



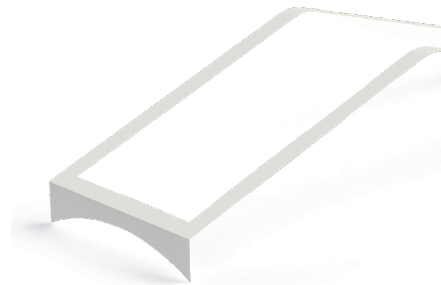
Panoramic clear

## Top options

---



Plain



Panoramic clear

## Custom options

---



Visual elements



Large dimensions



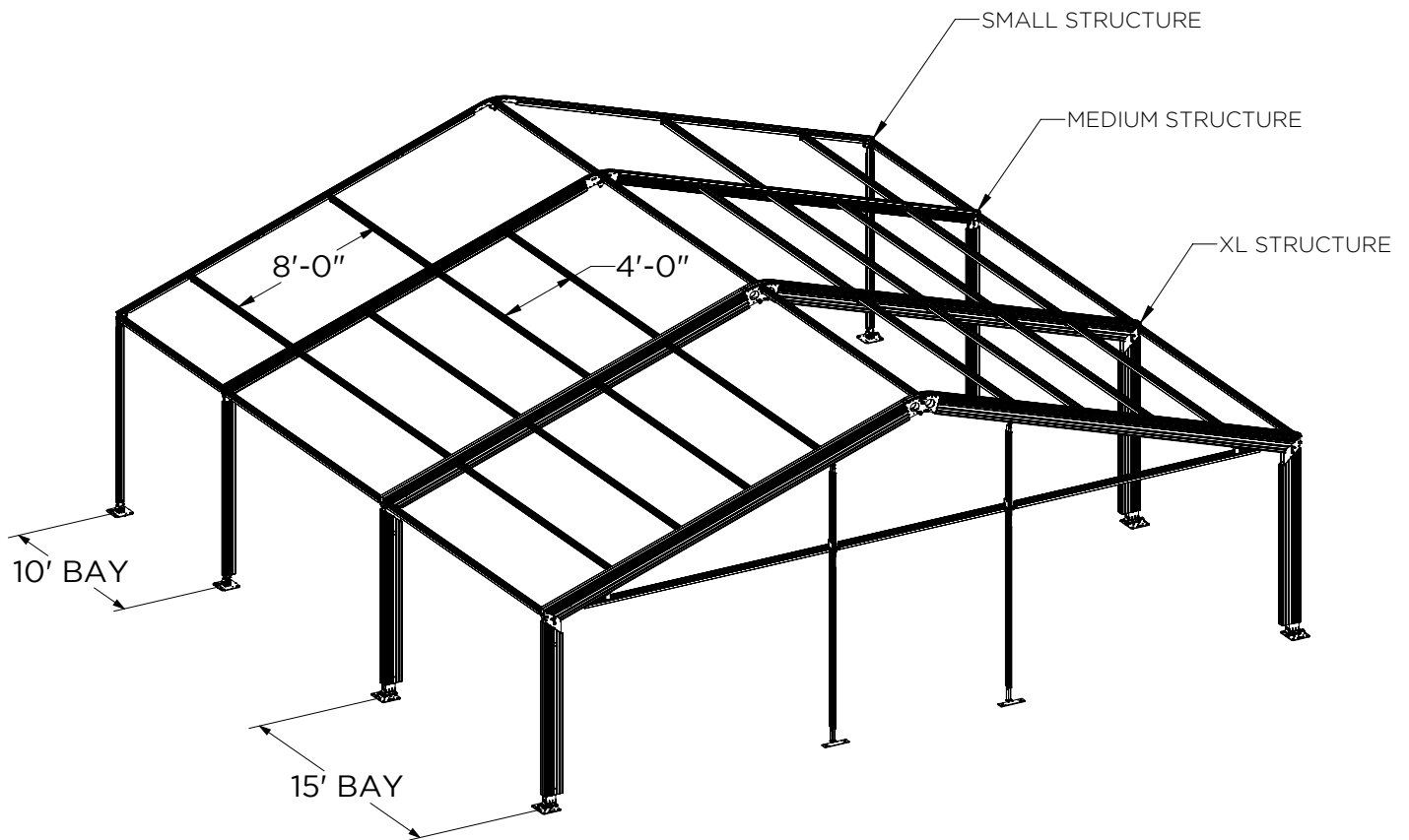
Colors



# TECHNICAL SHEET

## OPTIONS

---



- 15' or 10' Bay
- Summer (8') or winter purlins (4')
- SMALL, MEDIUM and XL structures are compatible (same tops & walls)
- Doors, opaque rigid walls and glass walls available (see cover page)
- Anchoring on all types of ground
- All other sizes available on request

**GRANDCHAMP STRUCTURE DESIGN Inc.**

450, Saint-Paul street  
Repentigny QC J5Z 0C8  
Canada

514 875-1913 • 1 800 565-TENT (8368)

Grandchamp.ca  
Structure-tent.com