



GRANDCHAMP

STRUCTURE DESIGN

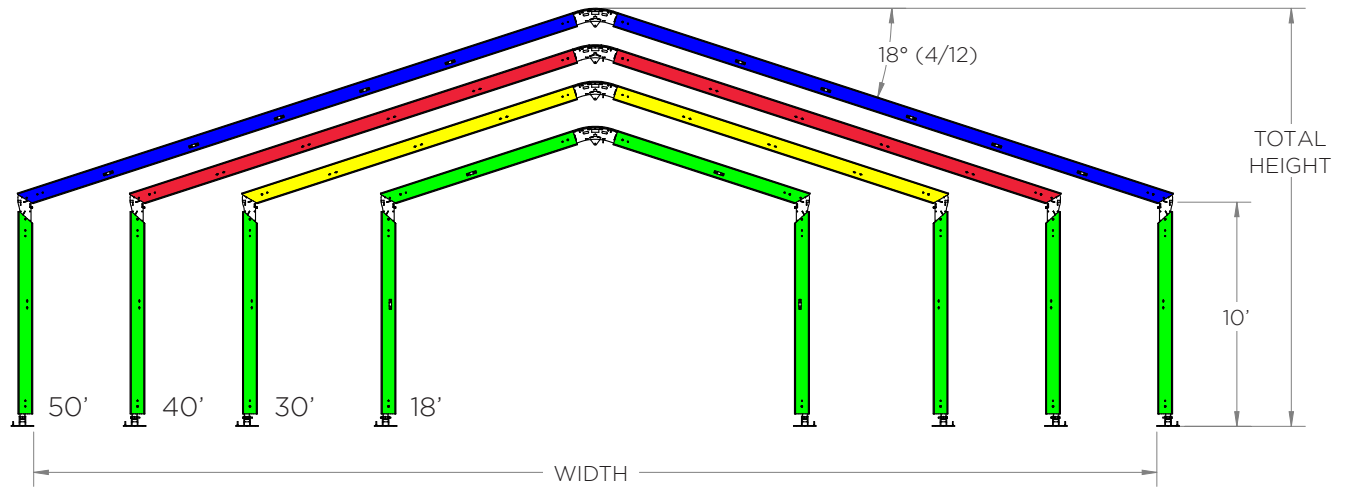
TECHNICAL SHEET
STRUCTURE



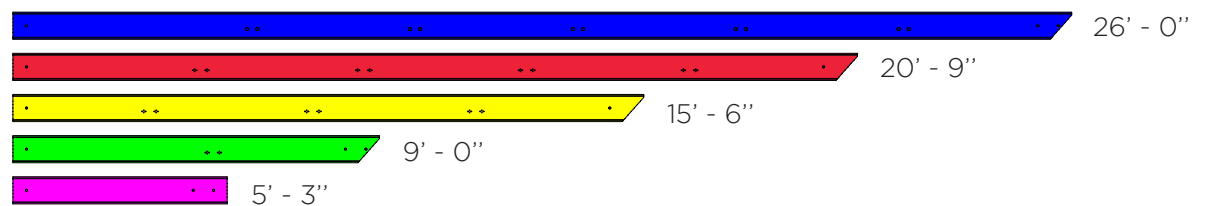


TECHNICAL SHEET

Grandchamp's Medium Beam



Width	18'	30'	40'	50'
Total height	13' - 9"	15' - 4"	17' - 0"	18' - 8"
Number of purlins in summer/*winter	5	5 / 9*	7 / 11*	9 / 13*
Rafter total length	9' - 0"	15' - 6"	20' - 9"	26' - 0"
Wind Resistance	136 km/h (85 mph)	128 km/h (80 mph)	120 km/h (75 mph)	88 km/h (55 mph)
Snow Load (Psf)	35	19	12	6



STRUCTURE & MEDIUM PROFILE

- Dimensions: 2.40" X 8.00"
- Anodized 6005-T5 aluminum extrusion
- Other parts in ASTM A36 and A514 Gr.S (CHT100) zinc plated steel
- Steel cables 1/4" - 7X19 white vinyl coated
- Square rail for 'Bolt-On' attachment system (pendant lights, decor, etc.)
- Universal bolt 1/2" - 13 Gr.5



TECHNICAL SHEET

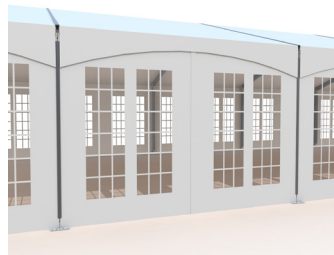
Vinyl

- Coated vinyl 22oz
- NFPA 701 and CAN / ULC-S109 fire retardant
- Opaque to UV rays (Blackout)
- Anti-mold vinyl
- All vinyl parts inserted in the Keder rails (13mm)
- Rollers for wall opening
- Carrying bags of vinyl parts included

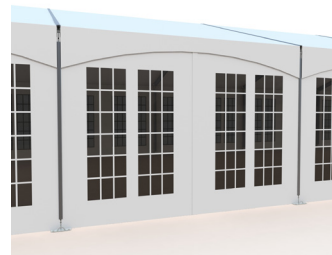
Wall options



Plain



Clear window



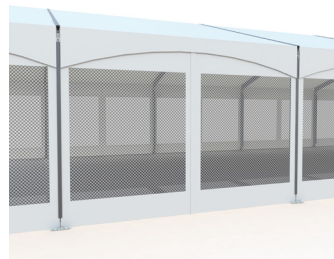
Tinted window



Panoramic clear



Panoramic tinted



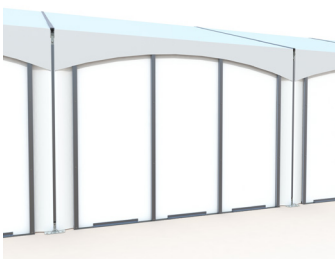
Mesh



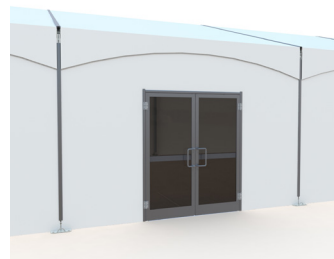
Strip window



Glass window



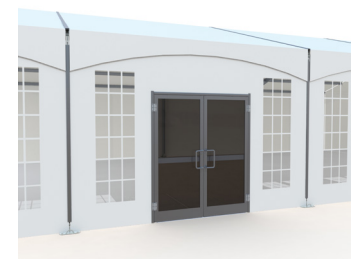
Rigid wall



Door with plain contour



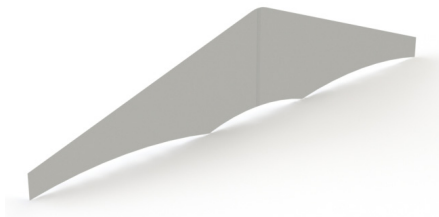
Door with glass contour



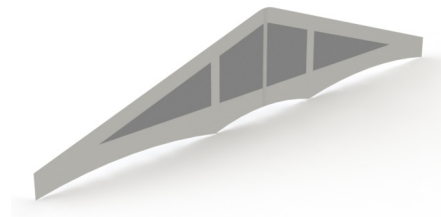
Door with window contour



Gable end options



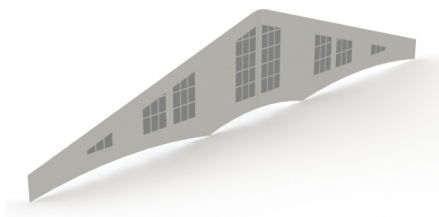
Plain



Panoramic tinted



Clear French Window

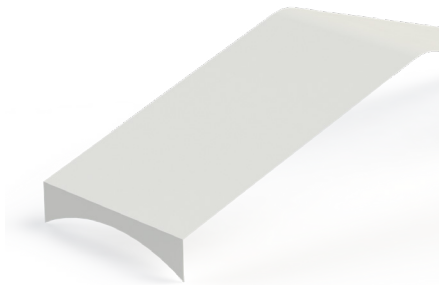


Tinted French Window

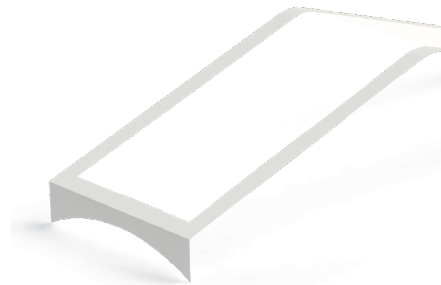


Panoramic clear

Top options



Plain



Panoramic clear

Custom options



Visual elements



Large dimensions

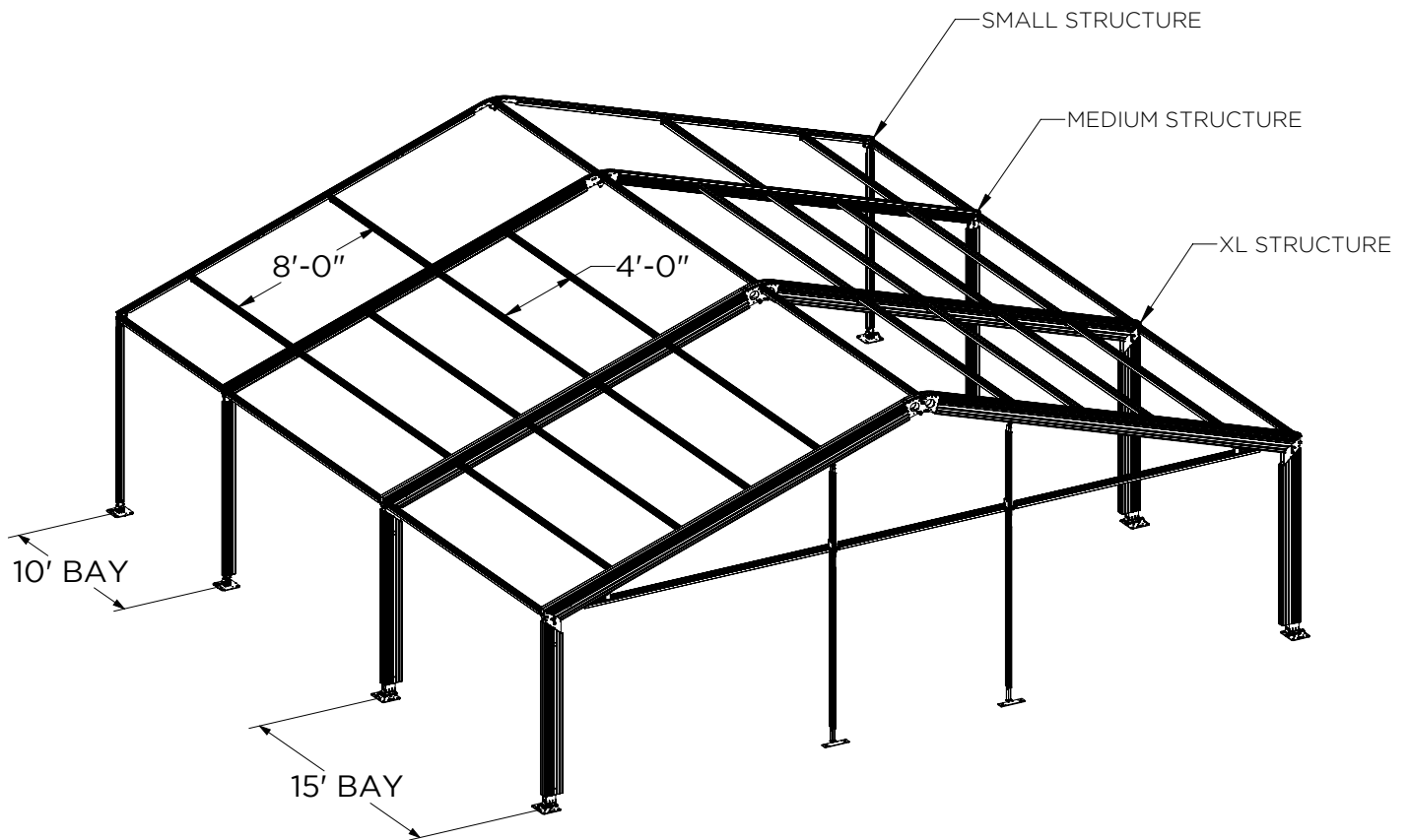


Colors



TECHNICAL SHEET

OPTIONS



- 15' or 10' Bay
- Summer (8') or winter purlins (4')
- SMALL, MEDIUM and XL structures are compatible (same tops & walls)
- Doors, opaque rigid walls and glass walls available (see cover page)
- Anchoring on all types of ground
- All other sizes available on request

GRANDCHAMP STRUCTURE DESIGN Inc.
450, Saint-Paul street
Repentigny QC J5Z 0C8
Canada

514 875-1913 • 1 800 565-TENT (8368)

Grandchamp.ca
Structure-tent.com